

Operational Visibility for the Multi-Cloud Enterprise

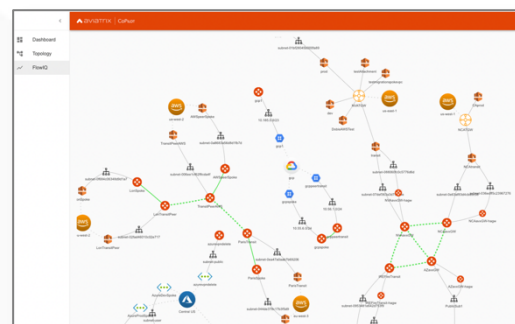
Aviatrix CoPilot provides a global operational view of your multi-cloud network not available from AWS, Azure or any other cloud provider. Enterprise IT teams – who need day-two operational visibility for cloud networking - use CoPilot’s dynamic topology mapping to maintain an accurate view of their global multi-cloud networks, FlowIQ to analyze global network traffic flows and global heat maps and time series trend charts to easily pinpoint and troubleshoot traffic anomalies.

Aviatrix Network Data Plane

CoPilot leverages the intelligence and advanced network and security services delivered by Aviatrix’s multi-cloud network platform. With CoPilot, cloud network and security operations teams have familiar day-two operational capabilities such as packet capture, trace route and ping to resolve problems faster. New operational features, include resource tagging, resource clustering, infrastructure monitoring and alerting, all specifically built for multi-cloud operations.

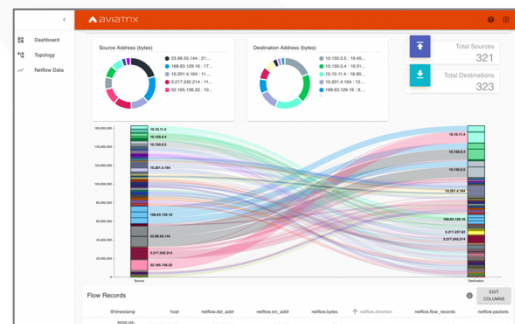
Dynamic Topology Mapping

Provides administrators a global view of the multi-cloud network topology including all resource information, connectivity status, and enables customized layouts, direct troubleshooting and global search.



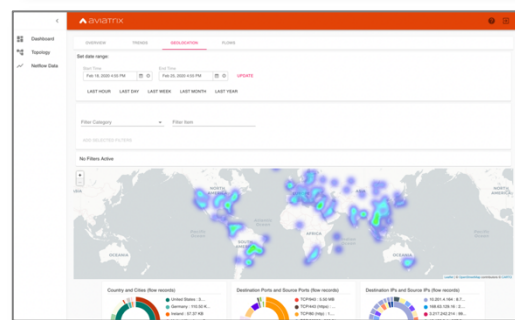
FlowIQ

Intelligent Traffic Flow Analytics allows network operations teams to quickly identify top talkers and drill into and analyze specific network traffic flows based on source, destination, ports protocols and more.



Global Traffic Heat Map

Visually detect unusual traffic patterns including traffic flows with sources or destinations in areas of the world that is unexpected. Security operations teams easily identify suspicious flows and block malicious IP addresses.



Network Health Dashboard

Provides current and accurate snapshot of network status, resources inventory, Aviatrix as well as native cloud networking resources via a single pane of glass.

